

STANDARD PLASTIC HOUSING RANGE

The SPECTRUM Filter Housing (SFH) range offers high-quality, reliable filtration with a design built to last. Covering a full spectrum of options - from standard, large, and small diameters to high-temperature variant - each housing is engineered with durable construction, clear or black sumps, and integrated pressure release buttons for easy and safe maintenance.

Designed to work seamlessly with standard pipework, the SFH range combines robust performance with flexibility, ensuring compatibility across a wide variety of setups. Manufactured to the same quality standards as the leading brands in the market, these housings provide confidence in both day-to-day operation and long-term reliability. Whether replacing existing units or upgrading a system, the SFH range delivers consistent filtration, straightforward installation, and maintenance simplicity.



TECHNICAL DATA



	Small Diameter (SD)		Regular Diameter (RD)	Large Diameter (LD)	High Temp (NR)	Natural (PN)
Port Sizes (")	Flat Head	Round Head	1/2 3/4	1 3/4 1 1/2	3/4	3/4
	1/4	1/2				
	3/8	3/4				
Cartridge Compatibility (")	4 7/8, 9 3/4, 9 7/8		9 3/4, 9 7/8, 10, 20	9 3/4, 10, 20	9 3/4, 9 7/8, 10, 20	10, 20
End-Cap Compatibility	CG, DOE, AA		DOE, AA, CG	DOE, AA	DOE, AA, CG	EG
Pressure Rating (bar)	6.9		6.9	6.9	6.3	6
Temperature Rating (°C)	4 - 42		4 - 42	4 - 42	4 - 72	4 - 60

FEATURES & BENEFITS



- **Durable, high-quality construction:** engineered for long-lasting reliability and consistent filtration performance.
- **Full range of sizes:** standard, small, large, high-temperature, and natural housings to suit any system requirement.
- **Clear or black sumps available:** for easy visual inspection of filter condition.
- **Integrated pressure release buttons:** simplifies maintenance and reduces the risk of spills or accidents. (not applicable for 1/4" SD housing)
- **Compatible with standard inline pipework:** straightforward installation and replacement, reducing downtime.

MATERIALS OF CONSTRUCTION



Small, Regular and Large Diameter

- O-ring: BUNA
- Head: ABS (LD) Polypropylene (SD/RD)
- PRV: Polypropylene
- Spring: 304 Stainless Steel
- Sump-Black: PK=Polypropylene
- Sump-Clear: SC=Polycarbonate (LD) Styrene Acrylonitrile (SD/RD)

High Temperature

- O-ring: Viton™
- Head: Nylon
- Sump-Red: Nylon

Natural

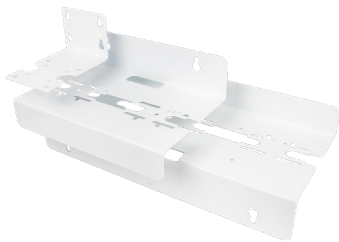
- EPDM
- Virgin Polypropylene
- Virgin Polypropylene

MAXIMUM FLOW RATE



Flow Rate (LPM)	SD		RD/NR/PN		LD	
Size (")	5	10	10	20	10	20
Carbon	1.9	3.8	3.8	7.6	7.6	15.1
Depth	10	20	20	40	20	40
Pleated	12.5	25	25	50	50	90

ACCESSORIES



Brackets

Brackets come complete with wall and head mounting screws. Made from galvanized steel and coated with a white powdered finish, which prolongs the brackets life.



Spanners

These spanners have been specifically designed to not damage the sump, which makes them invaluable for cartridge change out.



Connectors

To join multiple housings together or connect inlet and outlet ports to pipework, a selection of suitable fittings are available.

Housing		Spanner	Single Bracket	Double Bracket	Triple Bracket	O-ring
SFH-	4 ⁷ / ₈ -SD 10SD	FH-SWSD	FH-BK-1-SD	FH-BK-2-SD	FH-BK-3-SD	SFH-ORING-SD
SFH-	10RD 20RD	FH-SWRD	FH-BK-1-RD	FH-BK-2-RD	FH-BK-3-RD	SFH-ORING-RD
SFH-	10LD 20LD	FH-SWLD	FH-BK-1-LD	FH-BK-2-LD	FH-BK-3-LD	SFH-ORING-LD
SFH-NR		FH-SWRD	FH-BK-1-RD	FH-BK-2-RD	FH-BK-3-RD	SFH-ORING-NR
SFH-PN		Included	Included	N/A	N/A	SFH-PN-SEAL

ORDERING GUIDE



	Material	Round (no of cartridges)	Length	Diameter	Port
SFH	PK SC	1	4 ⁷ / ₈ , 10	SD	1/4, 3/8, 1/2, 3/4
			10,20	RD	1/2, 3/4
			10,20	LD	3/4, 1, 1 1/2
	NR	1	10,20	RD	3/4
	PN	1	10,20	RD	3/4